

COUPLINGS, MULTICOUPLINGS & MOULD COOLING PRODUCTS

KUPPLUNGEN, MULTIKUPPLUNGEN & KÜHLUNGSELEMENTE FÜR WERKZEUGE

SERIE 121



**Coupler and Plug
Kupplung und Nippel**

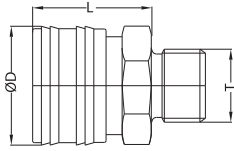
Connection
Anschlüsse
T

Order No / Bestellnr.

Ø

L

SW



Male Thread Couplings
Without Valve
Kupplungen ohne Ventil
Aussengewinde

BSP 3/8"

121 EGF 17

34

53

27

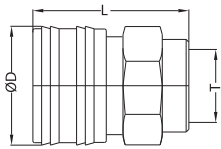
BSP 1/2"

121 EGF 21

34

53

27



Female Thread Couplings
Without Valve
Kupplungen ohne Ventil
Innengewinde

BSP 3/8"

121 DGF 17

34

45

27

BSP 1/2"

121 DGF 21

34

45

27

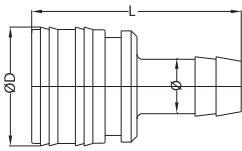
BSP 3/4"

121 DGF 26

34

45

32



Hose Tail Couplings Without Valve
Kupplungen ohne Ventil
Schlauchtülle

Ø 13

121 HGF 13

34

53

Ø 16

121 HGF 16

34

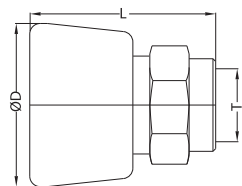
58

Ø 19

121 HGF 19

34

58



BSP 3/8"

121 DGF 17KE

47

39

27

BSP 1/2"

121 DGF 21KE

47

39

27

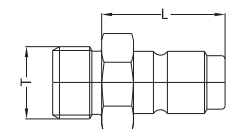
BSP 3/4"

121 DGF 26KE

47

39

36



Male Threaded Plugs
Nippel mit Außengewinde

BSP 1/4"

121 EU 13

36

22

BSP 3/8"

121 EU 17

36

22

BSP 1/2"

121 EU 21

36

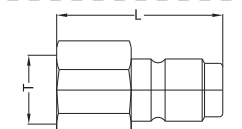
27

BSP 3/4"

121 EU 26

36

32



Female Threaded Plugs
Nippel mit Innengewinde

BSP 1/4"

121 DU 13

42

27

BSP 3/8"

121 DU 17

42

27

BSP 1/2"

121 DU 21

47

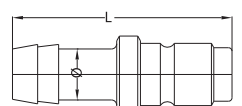
27

BSP 3/4"

121 DU 26

50

32



Hose Tail Plugs
Nippel mit Schlauchtülle

Ø 13

121 HU 13

62.5

Ø 16

121 HU 16

62.5

Ø 19

121 HU 19

62.5

Temperature Range - Temperaturbereich
-20°C +100°C (-4°F +212°F)

Working Pressure - Betriebsdruck
Brass - Messing : 0 - 50 bar (0 - 725 PSI)
Stainless Steel - Edelstahl : 0 - 150 bar
(0 - 2175 PSI)

Flow capacity - Nennweite
NW - 12 mm (85 l/min)

For optional orders please add the symbol of your option end of the order no.
Bei Bestellungen Kennbuchstabe bitte hinzufügen (Beispiel)

Standard
Stainless Steel 316 L /
Stainless Steel - Edelstahl (316 L)

Coupler Body-
Kupplungsgrundkörper : Stainless Steel -
Edelstahl (316 L)
Springs - Federn : Stainless Steel -
Edelstahl (316 L)
Balls - Kugeln : Stainless Steel -
Edelstahl (316 L)
Seals - Dichtungen : Nitrile - NBR

Options - Optionen
Material - Material
Brass Chrome Plated / Messing Verchromt

Coupler Body-
Kupplungsgrundkörper : Brass Chrome Plated -
Messing verchromt
Springs - Federn : Stainless Steel -
Edelstahl (302 L)
Balls - Kugeln : Stainless Steel -
Edelstahl (316 L)
Seals - Dichtungen : FKM

● RUBBER COATED SOCKETS ●



Options - Optionen
KE - Safety - Sicherheitskupplung
Stainless Steel - Edelstahl
Rubber Coated Socket - Kupplung mit
Kautschukbeschichtung

For optional orders please add the symbol of your option end of the order no.
Bei Bestellungen Kennbuchstabe bitte hinzufügen (Beispiel: 121 DGF 21-KE)